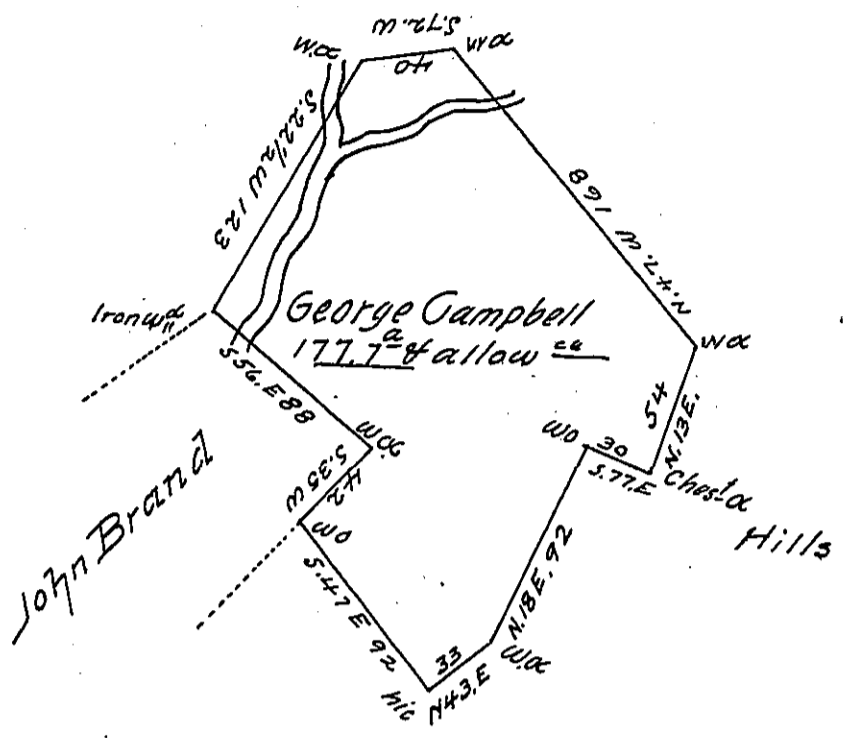


Hills

Vacant Land



Survey'd to George Campbell on the 9th Day of June 1772. The above described tract of One hundred & seventy seven acres & three quarters of an acre & allowance of Six p Gt situate on Altman's Run above & adjoining John Brand in Westmorland County. By ~~Warr~~ Order of the 7th day of April 1769 No. 2904

J. Joshua Elder D.S.

To John Lukens Esq. S. Genl.

IN TESTIMONY that the above is a copy of the original remaining on file in the Department of Internal Affairs of Pennsylvania, made conformably to an Act of Assembly approved the 16th day of February, 1833, I have hereunto set my Hand and caused the Seal of said Department to be affixed at Harrisburg, this thirty first day of August 1905

Anna D. Brown
Secretary of Internal Affairs.